

7

Characteristics and Dimensions

1 Molded Case Circuit Breakers 140

• NF30-CS	140
• NF32-SV, NF63-CV/SV/HV	142
• NF125-CV/SV/HV	144
• NF125-UV	146
• NF250-CV/SV/HV	148
• NF250-UV	150
• NF125-SGV/LGV/HGV/RGV, NF160-SGV/LGV/HGV, NF250-SGV/LGV/HGV/RGV	152
• NF125-SEV/HEV, NF250-SEV/HEV	154
• NF400-CW/SW	156
• NF400-SEW/HEW/REW	158
• NF400-UEW	160
• NF630-CW/SW	162
• NF630-SEW/HEW/REW	164
• NF800-CEW/SEW/HEW/REW.....	166
• NF800-SDW	168
• NF800-UEW	170
• NF1000-SEW, NF1250-SEW	172
• NF1250-SDW	174
• NF1600-SEW	176
• NF1600-SDW	178

2 Earth Leakage Circuit Breakers 180

• NV32-SV, NV-63CV/SV/HV	180
• NV125-CV/SV/HV	182
• NV250-CV/SV/HV	184
• NV125-SEV/HEV, NV250-SEV/HEV	186
• NV400-CW/SW	188
• NV400-SEW/HEW/REW	190
• NV630-CW/SW	192
• NV630-SEW/HEW	194
• NV800-SEW/HEW	196

3 UL 489 Listed Circuit Breakers 198

• NF50-SVFU, NV50-SVFU	198
• NF100-CVFU, NV100-CVFU	200
• NF125-SVU/HVU, NV125-SVU/HVU	202
• NF225-CWU	204
• NF250-SVU/HVU, NV250-SVU/HVU	206
• NF400-SWU/HWU	208
• NF630-SWU/HWU	210

4 Measuring Display Unit Breakers 212

• NF250-SEV/HEV with MDU	212
• NF400-SEP/HEP with MDU	214
• NF630-SEP/HEP with MDU, NF800-SEP/HEP with MDU ...	216

5 Miniature Circuit Breakers, Residual Current Circuit Breakers, Residual Current Circuit Breakers with Overcurrent Protection and Isolating Switch 218

• BH, BH-P	218
• BH-D6, BH-D10	219
• BH-DN	220
• BV-D	221
• BV-DN	222
• KB-D	223

6 Circuit Protectors 224

• CP30-BA	224
-----------------	-----

7 Electrical Operated Circuit Breakers 225

NF50-SVFU NV50-SVFU



NV50-SVFU

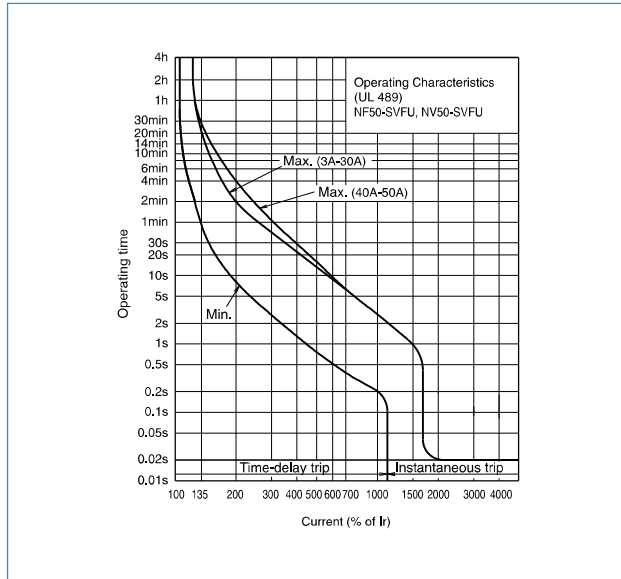
Model		NF50-SVFU		Model		NV50-SVFU		
Rated current In (A) Rated ambient temperature 40°C		(3) 5 10 15 20 30 40 50		Rated current In (A) Rated ambient temperature 40°C		(5) (10) 15 20 30 40 50		
Number of poles		2 3		Phase line		1φ2W 3φ3W 1φ2W		
Rated short-circuit breaking capacity (kA)	UL 489 CSA C22.2 No.5-02	Rated voltage VAC	240	Rated voltage VAC	UL 489		120-240	
		600Y/347V	-		IEC 60947-2		100-240	
		480V	-		EN 60947-2		100-440	
		AC 480Y/277V	-		Rated current sensitivity IΔn mA		30 50 30 50 100	
		240V	14		Pick-up current UL 1053		75% of IΔn	
		120V	-	High-speed type	Operating time (sec) within AT 5IΔn		0.04 (*1)	
		Rated insulation voltage U _i V	440	Earth-leakage indication system		Indicator window		
Rated short-circuit breaking capacity (kA)	IEC 60947-2 EN 60947-2 (I _{cu} /I _{cs})	Rated insulation voltage U _i V	440	Rated short-circuit breaking capacity (kA)	UL 489 CSA C22.2 No.5-02	AC	480V	-
		690V	-				240V	14
		500V	-				120V	14
		440V	7.5/4				440V	- 7.5/4
		415V	10/5		IEC 60947-2 EN 60947-2 (I _{cu} /I _{cs})	AC	400V	- 10/5
		400V	10/5				230V	15/8 15/8
		380V	10/5				100V	15/8 15/8
		230V	15/8					
Standard attached parts (Front connection)				IEC35 rail mounting claws				

Note *1 0.1 for UL1053.

Remark: 1. The mounting screws must be prepared by the user. (Recommended size: M4×0.7×65 (2 pcs).)

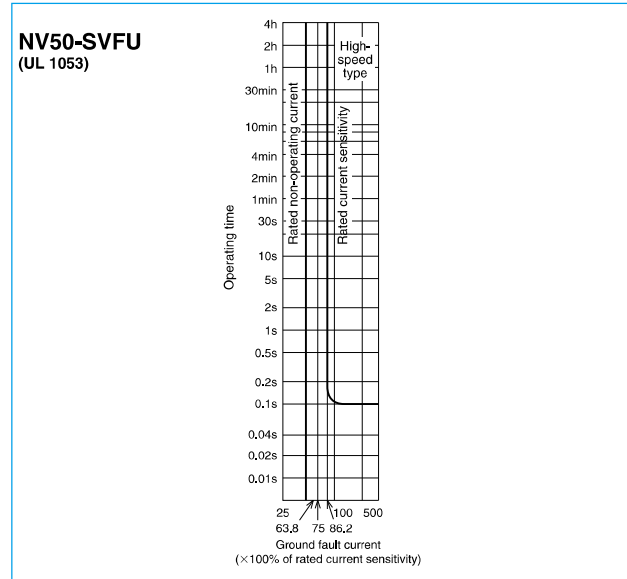
Operating Characteristics

(The CE and CCC characteristics are noted differently. Contact us for more information.)

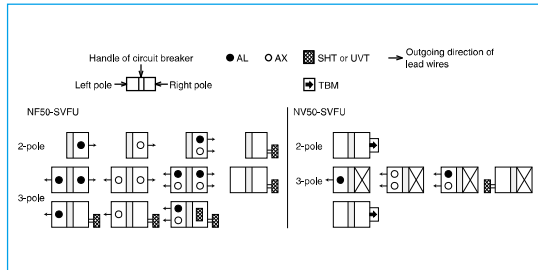


Earth Leakage Tripping Characteristics

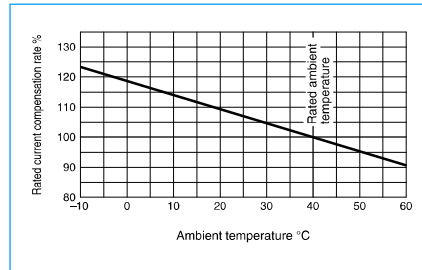
(The CE and CCC characteristics are noted differently. Contact us for more information.)



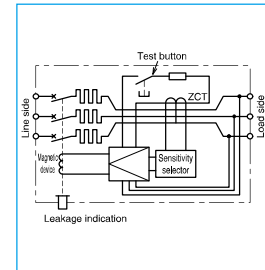
7 Internal Accessories



Temperature Compensation Curve



Internal Wiring Diagram

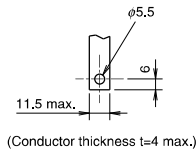
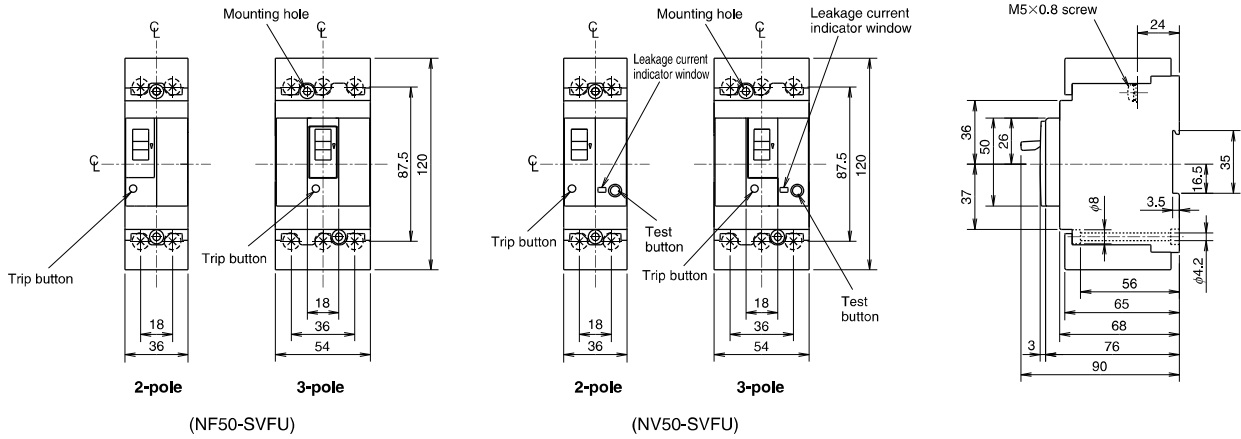


External Accessories

Accessories		Type name	Reference page	Accessories		Type name	Reference page
Operating handle	F	2P	F-03SVUL2	Terminal cover	Large	2P	TCL-03SVU2
		3P	F-03SVUL			3P	TCL-03SVU3
	V	2P	V-03SVUL2				
		3P	V-03SVUL				
Handle lock device	HL	HLF-03SVU					
	HL-S	HLS-03SVU					

Outline Drawing

Front connection



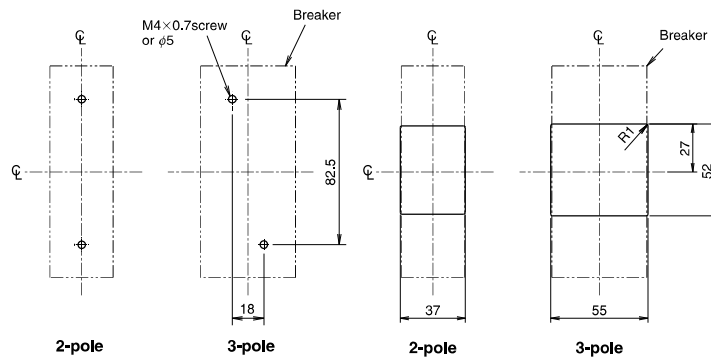
Conductor drilling for direct connection

Remarks: 1. The mounting screws are not enclosed with the breaker.
 2. The wires cannot be connected directly.

Compatible crimp terminals Tightening torque 22lb-in (2,5N-m)

Applicable wire range (*1)	Crimp terminal type (*2)		
	mm ²	AWG (#) (60°C/75°C)	
1.04-2.63	16-14	JST R2-5 2-M5	R2-5 R2-5M
		V2-5 V2-M5	
2.63-4.6	12	-	R3.5-5S R3.5-SL
2.63-6.64	12-10	R5.5-5	R5.5-5 R5.5-S R5.5-SN
		V5.5-5	
6.64-10.52	8	R8-5	R8-5 R8-5S
10.52-16.78	6	R14-5	R14-5 R14-5S
		14-NK5	
16.78-26.66	4	22-S5 22-S6	R22-5S

JST: Japan Solderless Terminal Mfg. Co.
 NTM: Nichifu Co., Ltd.
 Notes *1 14AWG or larger to comply with UL Standards.
 *2 When using with a wire connection, use the crimp terminal combination shown above.



Drilling plan

Front panel drilling plan

The drilling dimensions have a 1.0 mm clearance on each side of breaker window frame.

NF100-CVFU NV100-CVFU



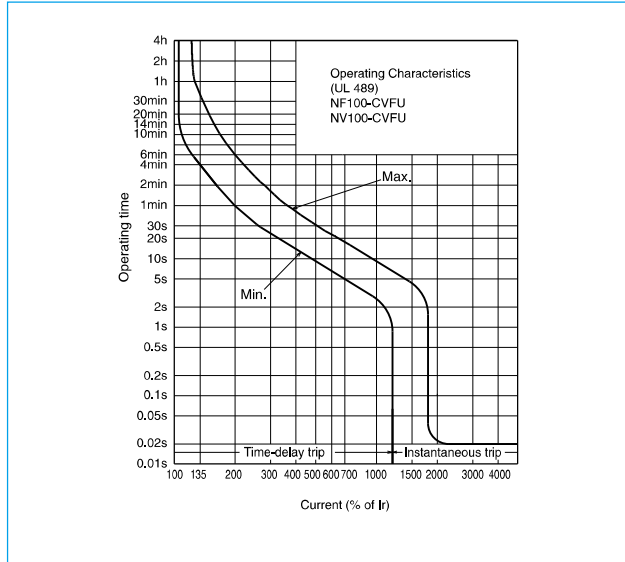
NF100-CVFU

Model		NF100-CVFU		Model		NV100-CVFU		
Rated current In (A) Rated ambient temperature 40°C		60 (70) 75 (80) (90) 100		Rated current In (A) Rated ambient temperature 40°C		60 (70) 75 (80) (90) 100		
Number of poles		2 3		Phase line		3φ3W 1φ2W		
Rated short-circuit breaking capacity (kA)	UL 489 CSA C22.2 No.5-02	Rated voltage VAC	240	Rated voltage VAC	UL 489	120-240		
		600V/347V	-		IEC 60947-2 EN 60947-2	100-440		
		480V	-		Rated current sensitivity IΔn mA		30/50/ 100/200/500 selectable	
	AC	480V/277V	-	High-speed type	Pick-up current UL 1053		75% of IΔn	
		240V	14		Operating time (sec) within AT 5IΔn		0.04 (*1)	
		120V	-		Earth-leakage indication system		Mechanical button	
IEC 60947-2 EN 60947-2 (Icu/Ics)	AC	Rated insulation voltage Ui/V	600	Rated short-circuit breaking capacity (kA)	UL 489 CSA C22.2 No.5-02	AC	480V	-
		690V	-			240V	14	
		500V	7.5/4			120V	14	
		440V	10/5		IEC 60947-2 EN 60947-2 (Icu/Ics)	AC	440V	10/5
		415V	10/5			400V	10/5	
		400V	10/5			230V	15/8	
		380V	10/5			100V	15/8	
230V	15/8	Standard attached parts (Front connection)		IEC35 rail mounting claws, Insulating barrier (2P: 2pcs, 3P: 4pcs) (Only for type with bar terminal) Mounting screw M4×0.7×55 (2 screws)				

Note *1 0.1 for UL1053.

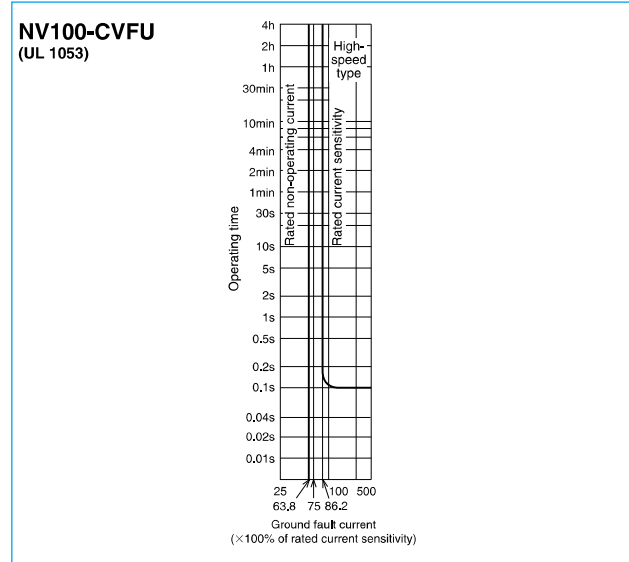
Operating Characteristics

(The CE and CCC characteristics are noted differently. Contact us for more information.)

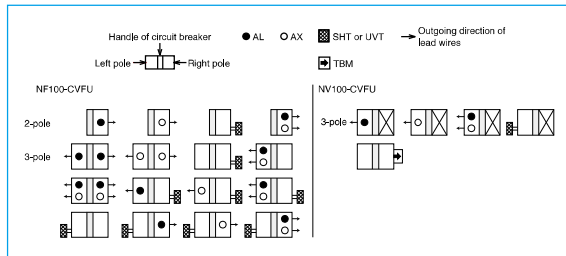


Earth Leakage Tripping Characteristics

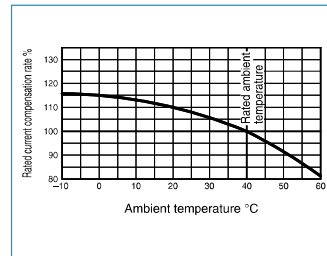
(The CE and CCC characteristics are noted differently. Contact us for more information.)



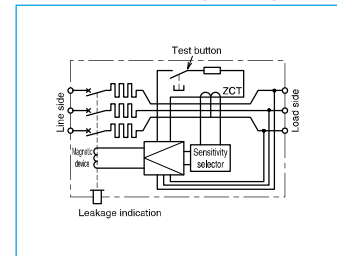
Internal Accessories



Temperature Compensation Curve



Internal Wiring Diagram

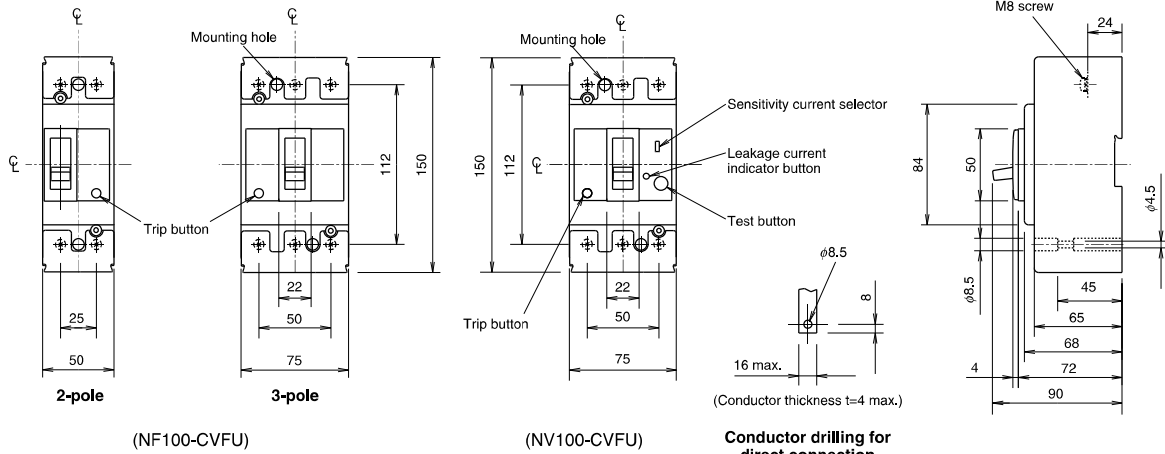


External Accessories

Accessories			Type name	Reference page	Accessories			Type name	Reference page	
Operating handle	F	2P	F-05SVUL2	117	Terminal cover	Large	TC-L	2P	TCL-05SVU2	121
		3P	F-05SVUL					TCL-05SVU2L		
	V	2P	V-05SVUL2	TCL-05SVU3						
		3P	V-05SVUL	TCL-05SVU3L						
Handle lock device	HL		HLF-05SVU	127						
	HL-S	2P	HLS-05SVU2							
		3P	HLS-05SVU							

Outline Drawing

Front connection



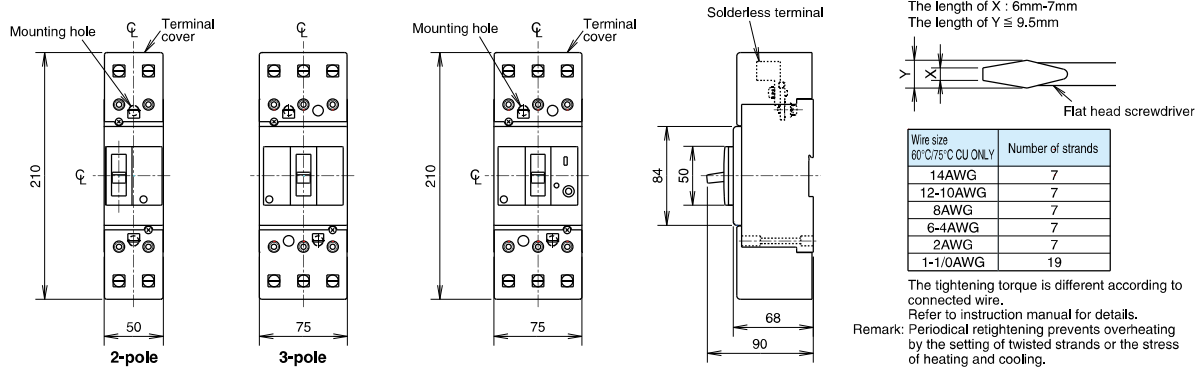
Conductor drilling for direct connection

Compatible crimp terminals Tightening torque 54lb-in (6N-m)

Applicable wire range		Crimp terminal type (*1)	
mm ²	AWG (#) (60°C/75°C)	JST	NTM
2.5-2.63	14	R2-8	R2-8
2.63-6.64	12-10	R5.5-8	R5.5-8
6.64-10.52	8	R8-8	R8-8
10.52-16.78	6	R14-8	R14-8 R14-8S
16.78-26.66	4	R22-8	R22-8S
26.66-42.42	2	38-S8	R38-8S
42.42-60.57	1/0	60-2BA 60-S8	CB60-8

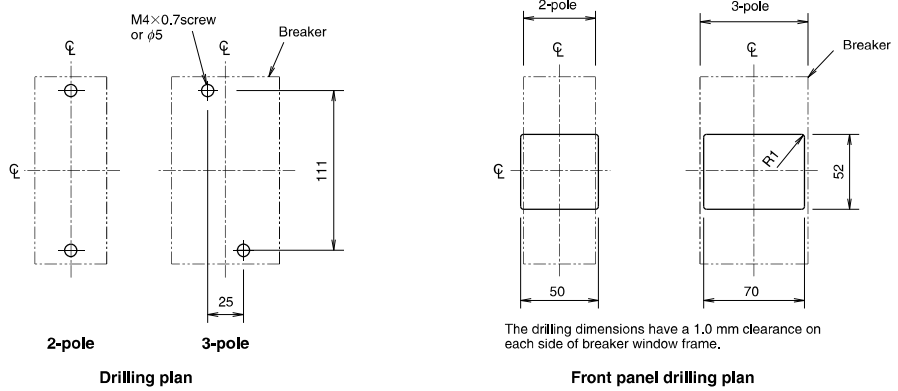
JST: Japan Solderless Terminal Mfg. Co.
 NTM: Nichifu Co., Ltd.
 Note *1 When using with a wire connection, use the crimp terminal combination shown above.

Front connection(solderless terminal)



Size of screwdriver with bolting
 Please bolt with flat head screwdriver.
 The length of X : 6mm-7mm
 The length of Y ≦ 9.5mm

The tightening torque is different according to connected wire.
 Refer to instruction manual for details.
 Remark: Periodical retightening prevents overheating by the setting of twisted strands or the stress of heating and cooling.



Drilling plan

Front panel drilling plan

NF125-SVU NF125-HVU NV125-SVU NV125-HVU

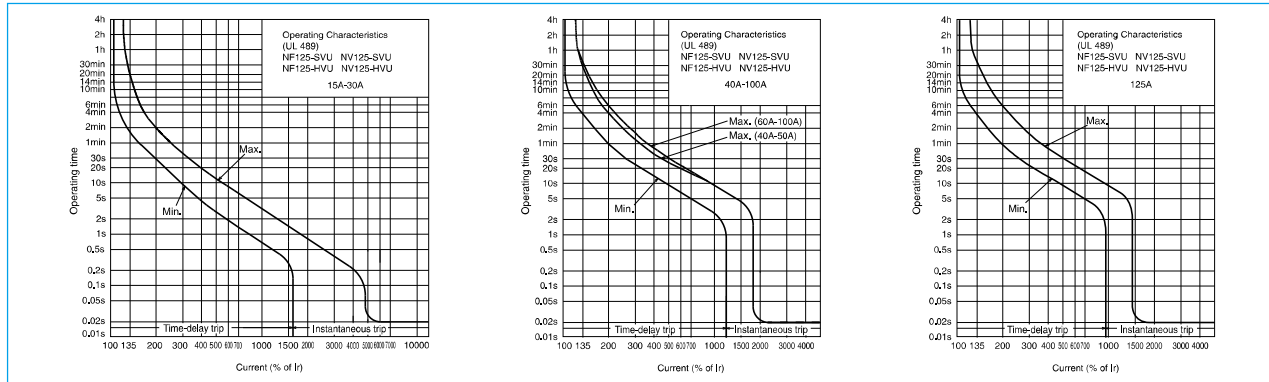


NF125-HVU

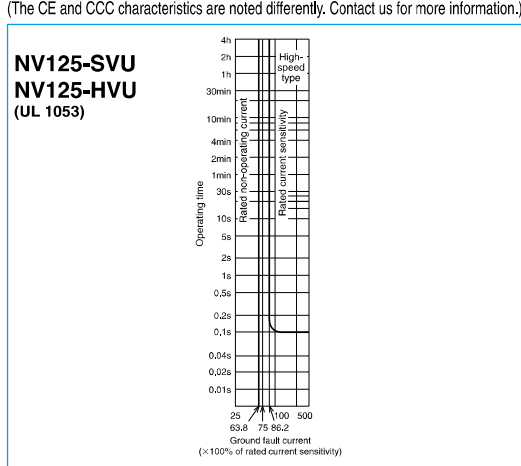
Model		NF125-SVU		NF125-HVU		Model		NV125-SVU		NV125-HVU				
Rated current I _n (A) Rated ambient temperature 40°C		15 20 30 40 50 60 (70) 75 (80) (90) 100	125	15 20 30 40 50 60 (70) 75 (80) (90) 100	125	Rated current I _n (A) Rated ambient temperature 40°C		15 20 30 (40) 50 60 75 100	125	15 20 30 (40) 50 60 75 100	125			
Number of poles		2 3	2 3	3	3	Phase line		3φ3W 1φ2W	3φ3W 1φ2W	3φ3W 1φ2W	3φ3W 1φ2W			
Rated short-circuit breaking capacity (kA)	UL 489 CSA C22.2 No.5-02	Rated voltage VAC		480	480	UL 489		100-440	100-440	100-440	100-440			
		600Y/347V		-	-	IEC 60947-2 EN 60947-2		100-440	100-440	100-440	100-440			
		AC		480V	30	30	50	50	Rated current sensitivity I _{Δn} mA		30/50/ 100/200/500 selectable	30/50/ 100/200/500 selectable	30/50/ 100/200/500 selectable	30/50/ 100/200/500 selectable
		240V		50	50	100	100	High-speed type		75% of I _{Δn}	75% of I _{Δn}	75% of I _{Δn}	75% of I _{Δn}	
120V		-	-	-	-	Rated current sensitivity I _{Δn} mA		30/50/ 100/200/500 selectable	30/50/ 100/200/500 selectable	30/50/ 100/200/500 selectable	30/50/ 100/200/500 selectable			
Rated insulation voltage U _i /V		690	690	690	690	Pick-up current UL 1053		75% of I _{Δn}	75% of I _{Δn}	75% of I _{Δn}	75% of I _{Δn}			
IEC 60947-2 EN 60947-2 (Icu/Ics)		690V	8/4	8/4	10/5	10/5	Operating time (sec) within AT 5Δn		0.04 (*1)	0.04 (*1)	0.04 (*1)	0.04 (*1)		
500V		18/9	18/9	25/13	25/13	Earth-leakage indication system		Mechanical button	Mechanical button	Mechanical button	Mechanical button			
440V		30/15	30/15	50/25	50/25	UL 489 CSA C22.2 No.5-02		480V	30	30	50	50		
415V		30/15	30/15	50/25	50/25	AC		240V	50	50	100	100		
400V		30/15	30/15	50/25	50/25	IEC 60947-2 EN 60947-2 (Icu/Ics)		120V	50	50	100	100		
380V		30/15	30/15	50/25	50/25	AC		440V	30/15	30/15	50/25	50/25		
330V		50/25	50/25	100/50	100/50	AC		400V	30/15	30/15	50/25	50/25		
230V		50/25	50/25	100/50	100/50	AC		230V	50/25	50/25	100/50	100/50		
100V		50/25	50/25	100/50	100/50	AC		100V	50/25	50/25	100/50	100/50		
Standard attached parts (Front connection)		Mounting screw M4×0.7×55 (2 screws), Insulating barrier (2P: 2pcs, 3P: 4pcs)												

Note *1 0.1 for UL1053.

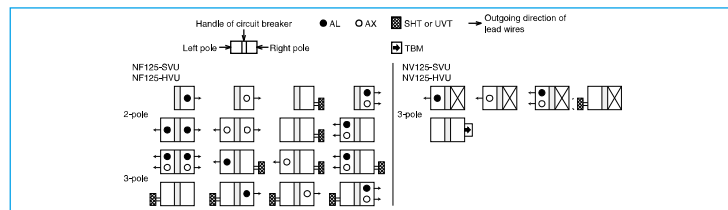
Operating Characteristics (The CE and CCC characteristics are noted differently. Contact us for more information.)



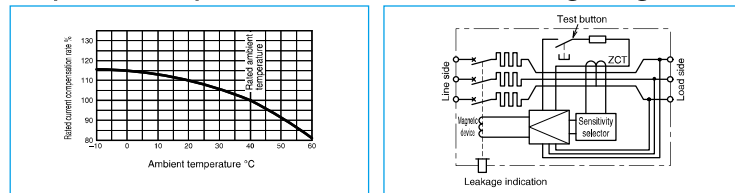
Earth Leakage Tripping Characteristics (The CE and CCC characteristics are noted differently. Contact us for more information.)



Internal Accessories



Temperature Compensation Curve Internal Wiring Diagram

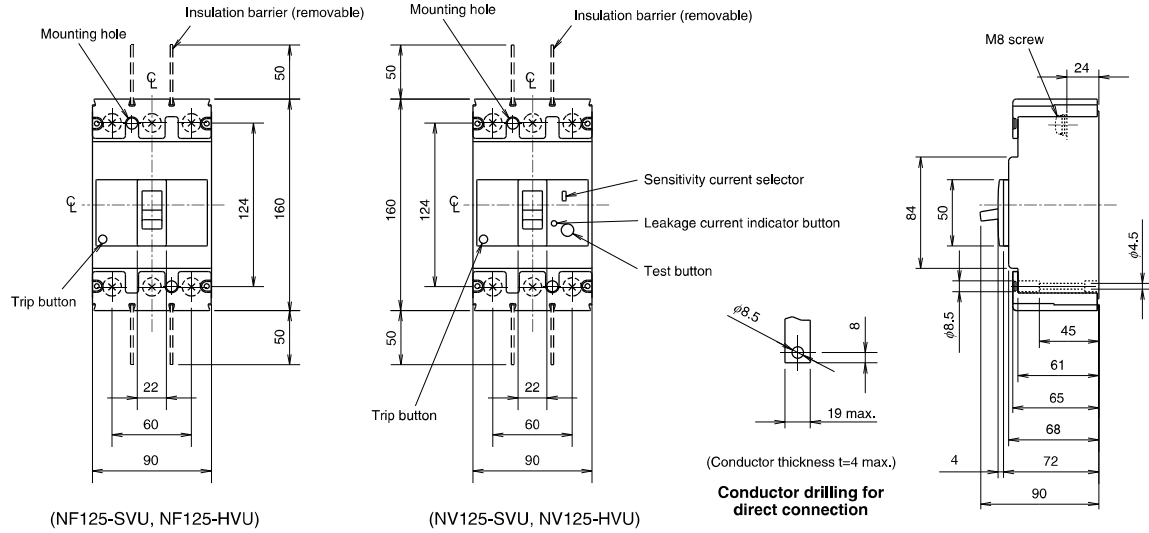


External Accessories

Accessories	Type name	Reference page	Accessories	Type name	Reference page
Operating handle	F	F-1SVUL	Terminal cover	Large	TC-L
	V	V-1SVUL		TCL-1SVU3	121
Handle lock device	HL	HLF-05SVU			
	HL-S	HLS-05SVU			

Outline Drawing

Front connection

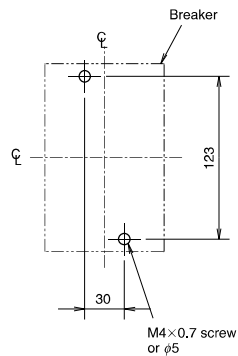
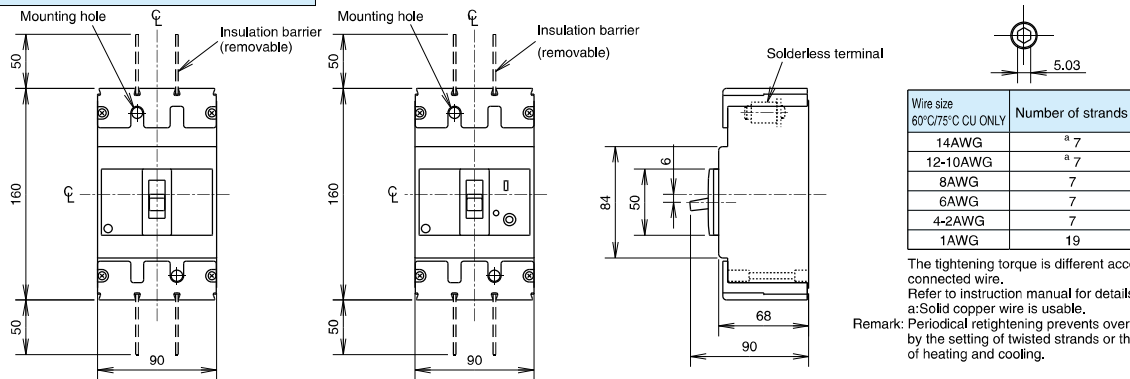


Compatible crimp terminals Tightening torque 54lb-in (6N·m)

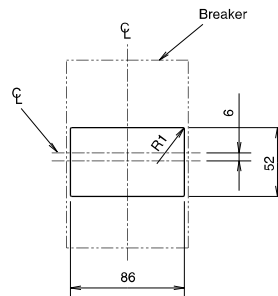
Applicable wire range	Crimp terminal type (*1)		
mm ²	AWG (#) (60°C/75°C)	JST	NTM
2.5-2.63	14	R2-8	R2-8
2.63-6.64	12-10	R5.5-8	R5.5-8
6.64-10.52	8	R8-8	R8-8
10.52-16.78	6	R14-8	R14-8
16.78-26.66	4	R22-8	R22-8S
26.66-42.42	2	38-S8	R38-8S
42.42-60.57	1/0	60-2BA	CB60-8
		60-S8	

JST: Japan Solderless Terminal Mfg. Co.
 NTM: Nichifu Co., Ltd.
 Note *1 When using with a wire connection, use the crimp terminal combination shown above.

Front connection (solderless terminal)



Drilling plan



Front panel drilling plan

Remark: 1. 2-pole models are 3-pole with the central pole conductor removed.

NF225-CWU

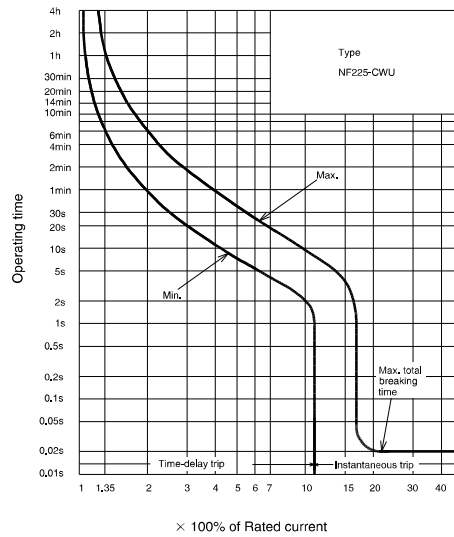


NF225-CWU

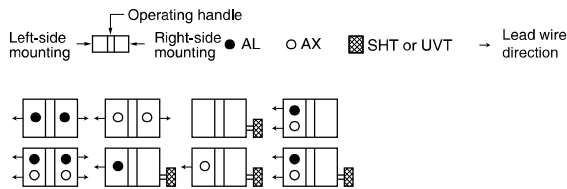
Model		NF225-CWU		
Rated current In (A) at ambient temperature 40°C (IEC30°C)		125 150 175 200 225		
Number of poles		3		
Rated short-circuit breaking capacities (kA)	UL 489	Rated voltage (VAC)		
		AC	240V	
	IEC 60947-2 (Icu/Ics)	Rated insulation voltage Ui (V)		
		AC	500V	10/5
			440V	15/8
			400V	18/9
DC	250V	35/18		
Standard attached parts		Mounting screw: M4×0.7×55 (2pcs), Insulation barrier: (4pcs), Terminal cover: (1 set) (*2)		

Notes *1 Use either two poles. When wired as shown at the bottom of page 32, the models can be used for up to 400 V DC.
*2 The standard configuration contains a protection cover and adopts the IP20 (finger protection) structure.

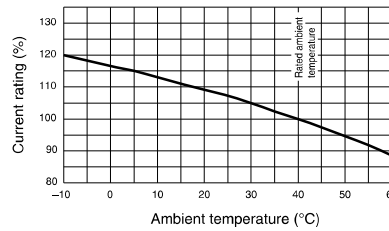
Operating Characteristics



Internal Accessories



Temperature Compensation Curve

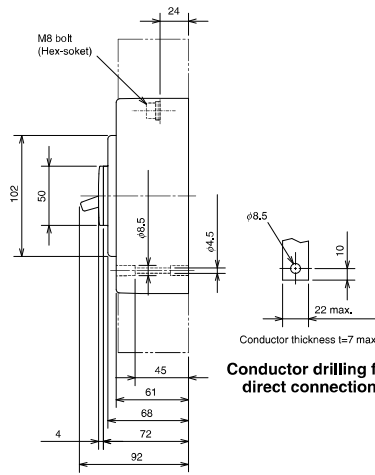
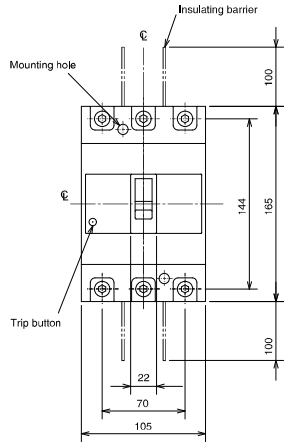


External Accessories

Accessories	Type name	Reference page	Accessories	Type name	Reference page
Operating handle	F	F-2SUL	Mechanical interlock	MI	MI-05SWU3
	V	V-2SUL			TCL-2SWU3
Handle lock device	HL	HLF-2SWU	Terminal cover	Large	TC-L
					TCL-2SWU3L

Outline Drawing

Front connection

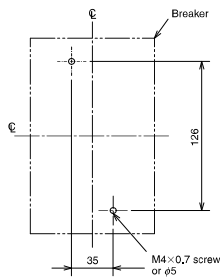


Conductor drilling for direct connection

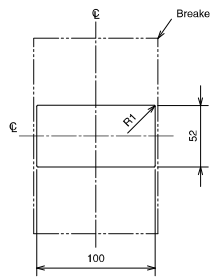
Compatible crimp terminals Tightening torque 90lb-in (10N.m)

Applicable wire range	Crimp terminal type (*1)	Crimp terminal type (*1)	
		JST	NTM
mm ²	AWG (#) (60°C/75°C)		
16.78-26.66	4	R22-8 22-S8	R22-8 R22-8S CB22-8S
26.66-42.42	2	R38-8 38-S8	R38-8 R38-8S
42.42-60.57	1/0	R60-8 60-2BA CB60-S8	R60-8 CB60-8 CB60-8S
60.57-76.28	2/0	70-8	R70-8
76.28-96.3	3/0	80-3BA CB80-S8	
96.3-117.2	4/0	100-3BA CB100-S8	

JST: Japan Solderless Terminal Mfg. Co.
 NTM: Nichifu Co., Ltd.
 Notes *1 When using with a wire connection, use the crimp terminal combination shown above.



Drilling plan



Front cover cutout
 1mm clearance on each side of handle

NF250-SVU NF250-HVU NV250-SVU NV250-HVU

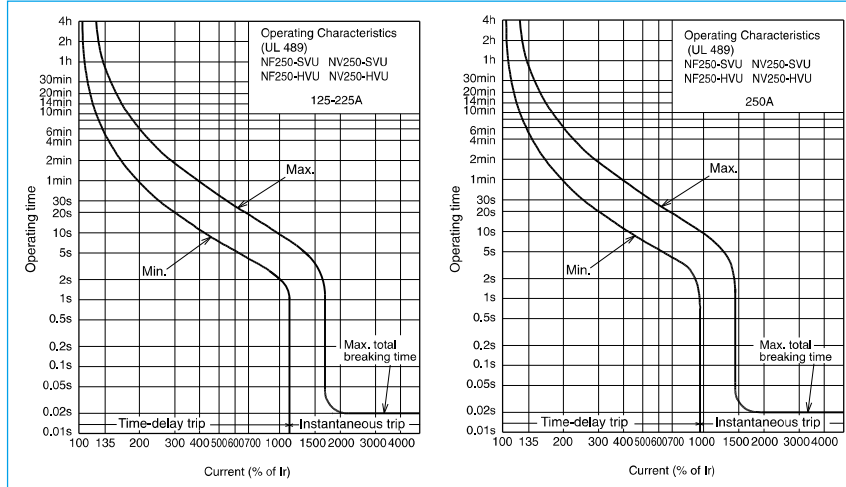


NF250-HVU

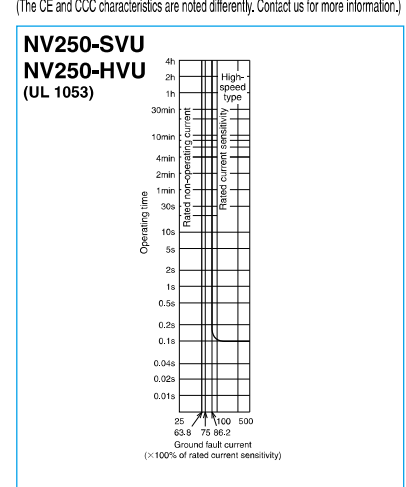
Model		NF250-SVU		NF250-HVU		Model		NV250-SVU		NV250-HVU	
Rated current I _n (A)		125	150	125	150	Rated current I _n (A)		125	150	125	150
Rated ambient temperature 40°C		175	200	175	200	Rated ambient temperature 40°C		225	225	225	225
Number of poles		3		3		Number of poles		3		3	
Phase line		3φ3W 1φ2W		3φ3W 1φ2W		Phase line		3φ3W 1φ2W		3φ3W 1φ2W	
Rated voltage VAC		480		600Y/347V		Rated voltage VAC		100-440		100-440	
UL 489 CSA C22.2 No.5-02		480V		600Y/347V		UL 489 EN 60947-2		100-440		100-440	
Rated short-circuit breaking capacity (kA)		480		600Y/347V		IEC 60947-2 EN 60947-2		100-440		100-440	
High-speed type		600Y/347V		600Y/347V		High-speed type		30/50/ 100/200/500 selectable		30/50/ 100/200/500 selectable	
Rated current sensitivity I _{Δn} mA		480V		600Y/347V		Rated current sensitivity I _{Δn} mA		30/50/ 100/200/500 selectable		30/50/ 100/200/500 selectable	
Pick-up current UL 1053		480V		600Y/347V		Pick-up current UL 1053		75% of I _{Δn}		75% of I _{Δn}	
Operating time s within AT 5I _{Δn}		480V		600Y/347V		Operating time s within AT 5I _{Δn}		0.04 (*1)		0.04 (*1)	
Earth-leakage indication system		480V		600Y/347V		Earth-leakage indication system		Mechanical button		Mechanical button	
UL 489 CSA C22.2 No.5-02		480V		600Y/347V		UL 489 CSA C22.2 No.5-02		480V		35	
IEC 60947-2 (Icu/Ics)		240V		50/25		IEC 60947-2 (Icu/Ics)		240V		65	
AC		120V		50/25		AC		120V		65	
AC		440V		50/25		AC		440V		36/18	
AC		400V		50/25		AC		400V		36/18	
AC		380V		50/25		AC		230V		65/33	
AC		230V		100/50		AC		100V		65/33	
Standard attached parts (Front connection)		Mounting screw M4×0.7×55 (2 screws), Insulating barrier (4pcs)									

Note *1 0.1 for UL1053.

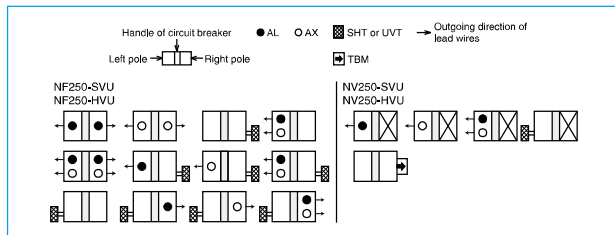
Operating Characteristics (The CE and CCC characteristics are noted differently. Contact us for more information.)



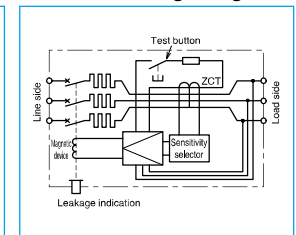
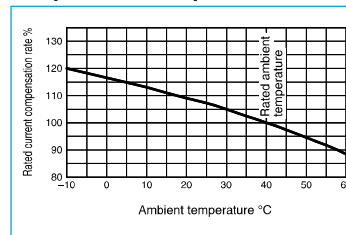
Earth Leakage Tripping Characteristics (The CE and CCC characteristics are noted differently. Contact us for more information.)



7 Internal Accessories



Temperature Compensation Curve Internal Wiring Diagram



External Accessories

Accessories	Type name	Reference page	Accessories	Type name	Reference page
Operating handle	F	F-2SVUL	Terminal cover	Large	TC-L
	V	V-2SVUL		TCL-2SVU3	
Handle lock device	HL	HLF-05SVU	TCL-2SVU3L		
	HL-S	HLS-2SVU			

NF400-SWU NF400-HWU

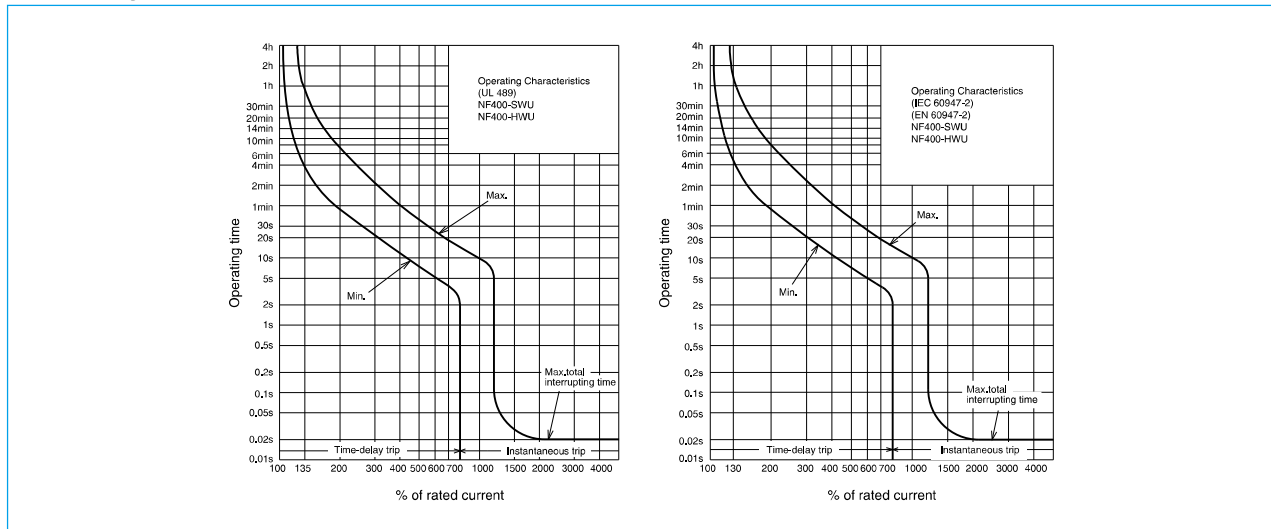


NF400-SWU

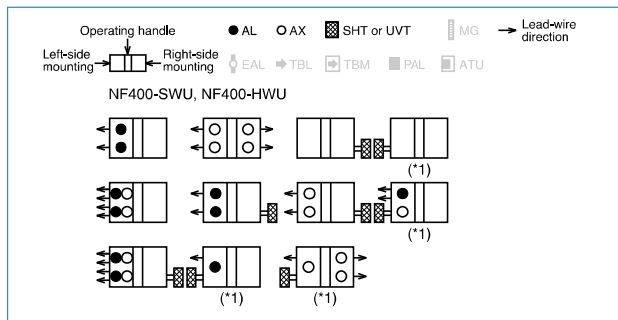
Model		NF400-SWU	NF400-HWU		
Rated current In (A) at ambient temperature 40°C		250 300 350 400	250 300 350 400		
Number of poles		3	3		
Rated short-circuit breaking capacities (kA)	UL 489	Rated voltage (VAC)			
		AC	600Y/347V	20	25
			480V	35	65
	240V		65	100	
	IEC 60947-2 EN 60947-2 (Icu/Ics)	Rated insulation voltage Ui (V)		690	690
		AC	690V	10/10(5/5) (*1)	15/10
500V			30/30(25/25) (*1)	42/42	
440V			42/42(36/36) (*1)	65/65	
400V	45/45(36/36) (*1)		70/70		
	230V	85/85(65/65) (*1)	100/100		
Standard attached parts		Mounting screw: M6×60 (4screws) Insulating plate (1pce) Insulating barrier (4pcs) (Only for type with bar terminals)	Mounting screw: M6×60 (4screws) Insulating plate (1pce) Insulating barrier (4pcs) (Only for type with bar terminals)		

Note *1 In case of solderless terminal, interrupting capacity reduces: (/).
*2 0.1 for UL1053.

Operating Characteristics

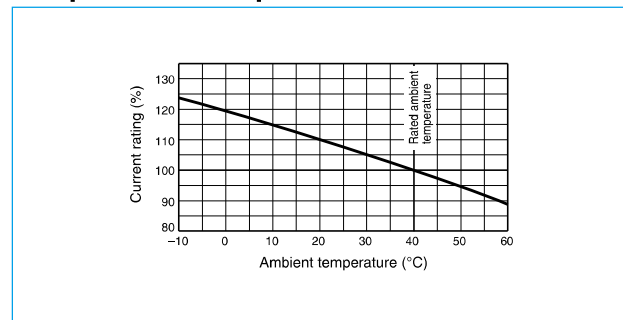


Internal Accessories



Note *1 Right-side mounting is standard of SHT and UVT. Specify separately for left-side mounting.

Temperature Compensation Curve

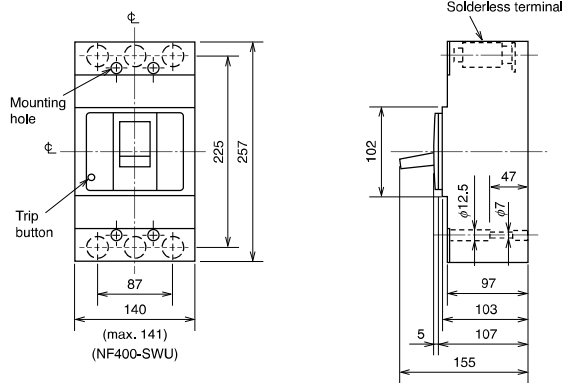


External Accessories

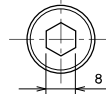
Accessories	Type name	Reference page	Accessories	Type name	Reference page
Operating handle	F	F-4SUL	Terminal cover	Large	TC-L
	V	V-4SUL			TCL-4SWU
Handle lock device	HL	HL-4SWU			

Outline Drawing

Front connection (Solderless terminal)



Hexagon socket set screw



Tightening torque
 275lb-in. (31.1N·m)

UL

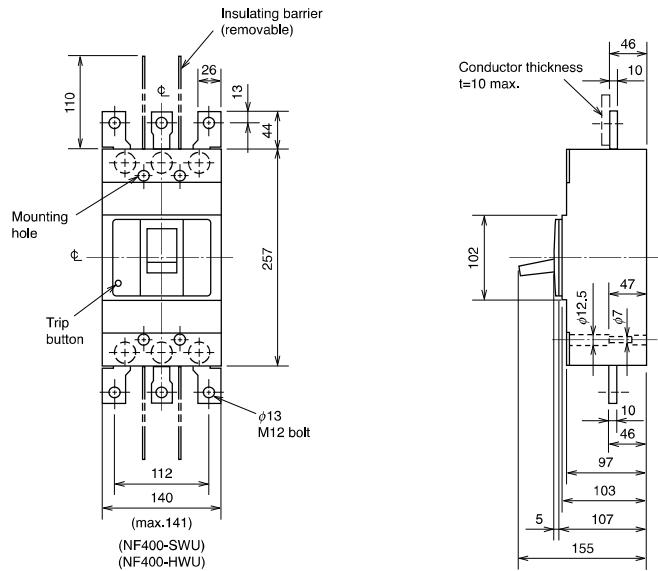
Ampere ratings	Wire size	Number of strands
250A, 300A	250-350kcmil CU	37
250A	350kcmil AL	
350A, 400A	(2) 3/0AWG CU	19

IEC

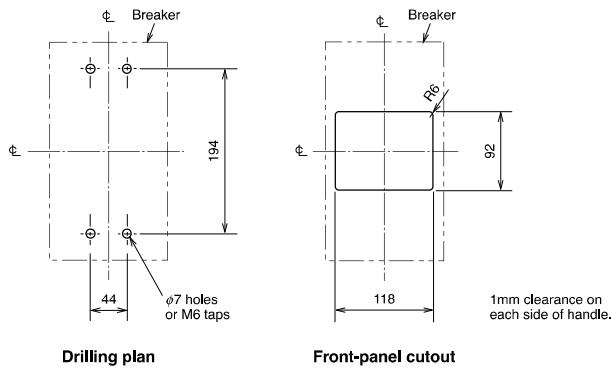
Ampere ratings	Wire size (IEC 60228)	
	Class 2	Class 5
250A, 300A	70-185mm ²	95-185mm ²
350A, 400A	150-240mm ²	150-185mm ²

- Remarks: 1. Do not remove solderless terminal in any case.
 2. When using the solderless terminals, conduct periodic inspections and tightening as the wires may wear down over use.

Front connection (Busbar terminal)

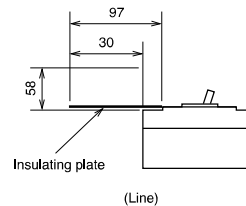


Remark: Do not remove busbar terminal in any case.



CAUTION

When mounted in steel or cast box cover must be insulated as shown. 58mm air gap to cover or 0.8mm fibre insulating plate extending 12.7mm out from each side of breaker.



(Line)

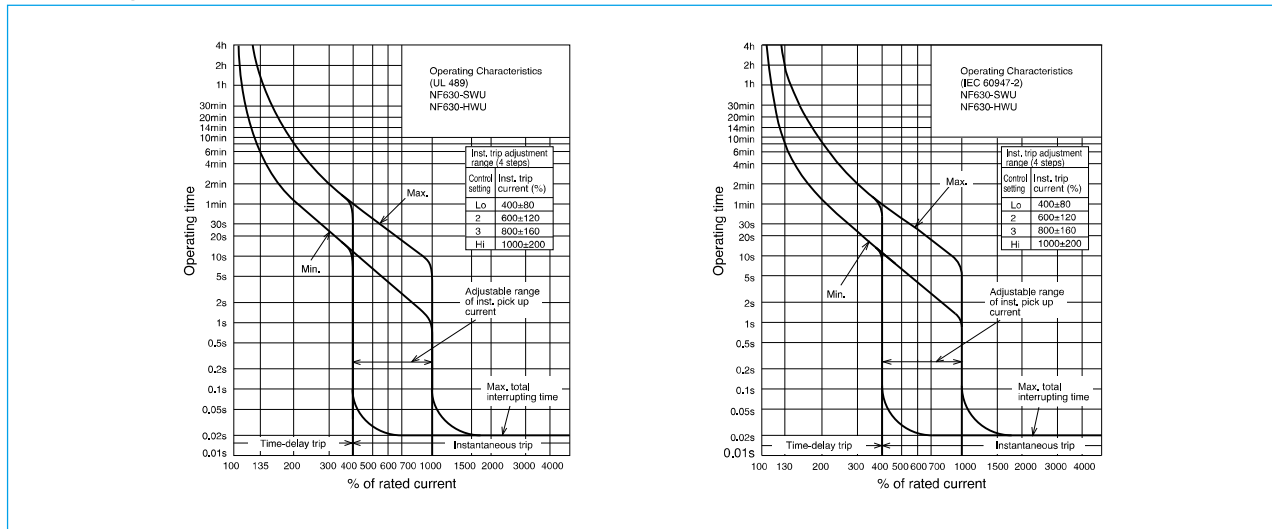
NF630-SWU NF630-HWU



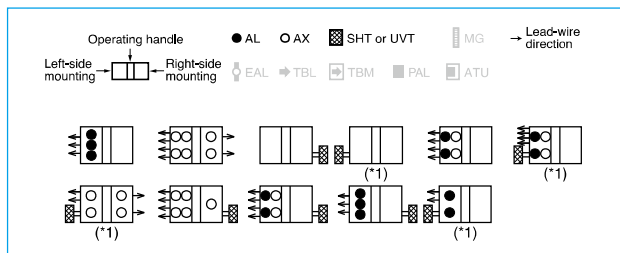
NF630-SWU

Model		NF630-SWU	NF630-HWU		
Rated current In (A) at ambient temperature 40°C		500 600 630	500 600 630		
Number of poles		3	3		
Rated short-circuit breaking capacities (kA)	UL 489 CSA C22.2 No.5-02	Rated voltage (VAC) AC	600Y/347V	20	25
			480V	35	65
			240V	85	100
	IEC 60947-2 EN 60947-2 (Icu/Ics)	Rated insulation voltage Ui (V) AC	690V	10/10	15/10
			500V	30/30	42/42
			440V	42/42	65/65
		400V	45/45	70/70	
		230V	85/85	100/100	
Standard attached parts		Mounting screw: M6×35 (4pcs) Insulating plate (1pce) Insulating barrier (500A:600A: 2pcs, 630A: 4pcs) (Only for type with bar terminals)	Mounting screw: M6×35 (4pcs) Insulating plate (1pce) Insulating barrier (500A:600A: 2pcs, 630A: 4pcs) (Only for type with bar terminals)		

Operating Characteristics

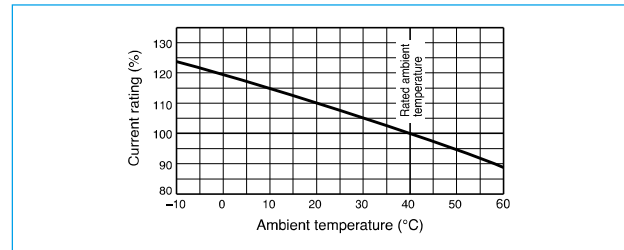


Internal Accessories



Note *1 Right-side mounting is standard of SHT and UVT. Specify separately for left-side mounting.

Temperature Compensation Curve

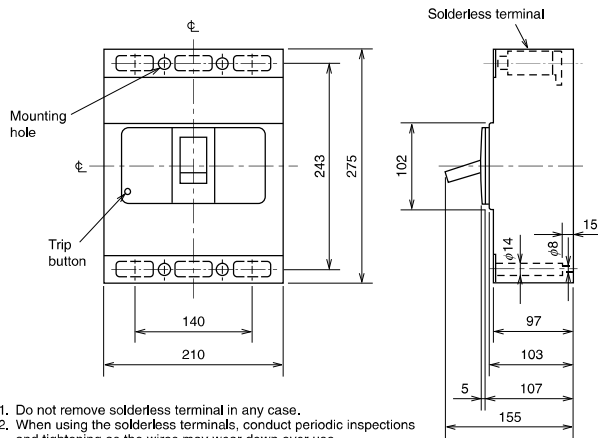


External Accessories

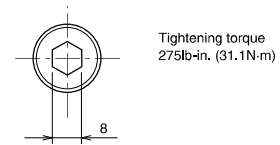
Accessories	Type name	Reference page	Accessories	Type name	Reference page
Operating handle	F	F-6SUL	Terminal cover	Large	TC-L
	V	V-6SUL		TCL-6SWU	
Handle lock device	HL	HL-4SWU			

Outline Drawing

Front connection (Solderless terminal)



Hexagon socket set screw



UL

Ampere ratings	Wire size	Number of strands
500A, 600A	(2) 250-350kcmil CU ONLY	37

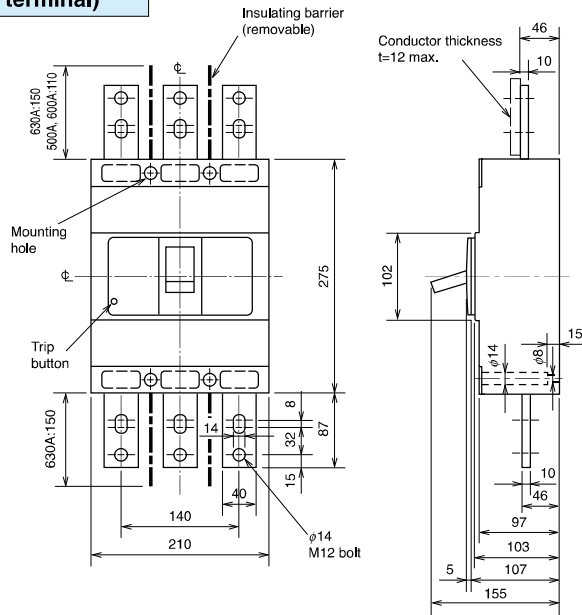
IEC

Ampere ratings	Wire size (IEC 60228)	
	Class 2	Class 5
500A, 600A	(2) 95-185mm ²	(2) 120-185mm ²

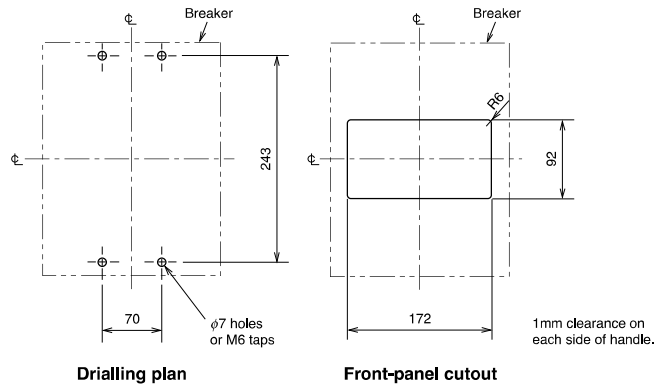
3. Use a wire size that can carry the rated current.
4. When using IEC Class 5 (multi-core wire), pay attention to strand breakage and pinching, etc., while tightening.
5. The 630A and NF630-HWU does not have a solderless terminal.

Remarks: 1. Do not remove solderless terminal in any case.
 2. When using the solderless terminals, conduct periodic inspections and tightening as the wires may wear down over use.

Front connection (Busbar terminal)



Remark: Do not remove busbar terminal in any case.



CAUTION
 When mounted in steel or cast box cover must be insulated as shown. 58mm air gap to cover or 0,8mm fibre insulating plate extending 12,7mm out from each side of breaker.

